

2023



The world of canvas lodges

www.trigano-hpa.com

Tipihome



Ø 5,56m, 2 bedrooms, 1 upstairs, kitchen, bathroom, Piloti-mounted flooring

4 People

30,64 m²

Kenya 46 SDB



2 bedrooms in the back, Kitchen, living room, Bathroom, Piloti-mounted flooring

4 - 8 People

46 m²

Kenya 34 SDB



2 bedrooms in the back, Kitchen, living room, Bathroom, Piloti-mounted flooring

4 - 6 People

34,5 m²

Kenya without water supply



2 bedrooms, Kitchen without water point Living room, Piloti-mounted flooring

4 - 8 People

34,5 ou 46 m²

Moorea



1 bedroom, Piloti-mounted flooring + terrace

1 - 2 People

5,5+5,4 m²

Bali 32



2 bedrooms, kitchen, living room, Piloti-mounted flooring

4 - 6 People

32 m²

Bali 20



2 bedrooms, Kitchen, Living room, Piloti-mounted flooring + canvas awning

4 - 6 People

20 m²

Marquises



2 bedrooms, Piloti-mounted flooring + terrace

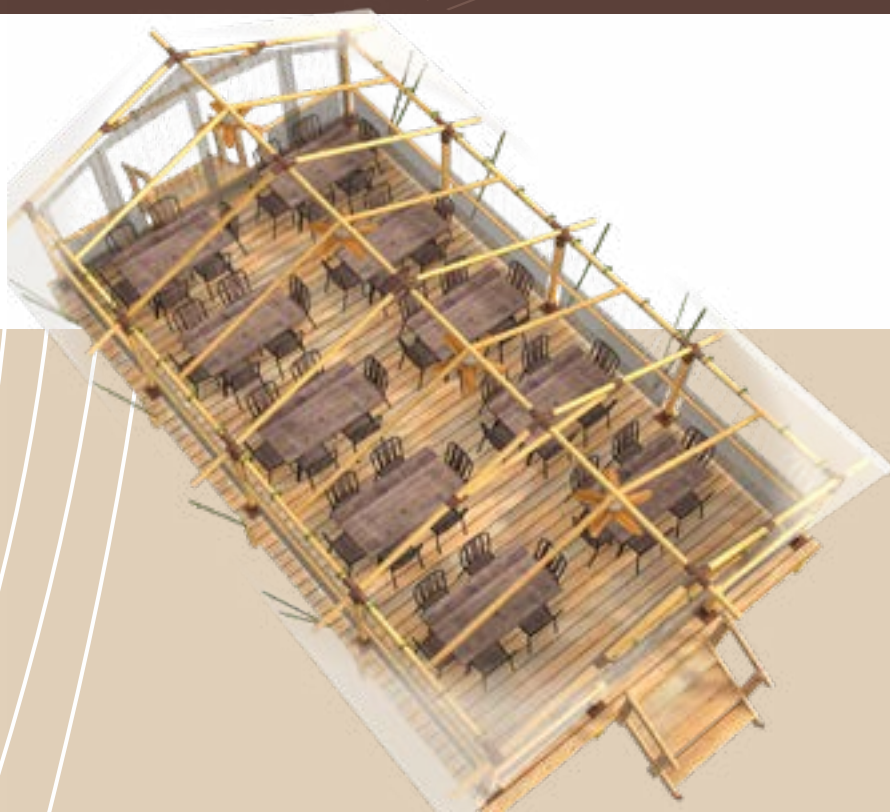
4 People

20+12,5 m²

Kenya Evènement



Restaurant - Meeting - Reception



Contents

Trigano expertise.....	04
The environmentally pack.....	06
Our web bonus.....	07
Installation services	09
The Moorea	10
Tipihome.....	12
The Kenya Lodge	16
Le Lodge Evènement	30
The Altitude option.....	34
The Lodge Bali	36
The Bungalow Marquises	46
Vintage furniture	50
The sleeping kit.....	54
The bathroom kit	56
Electric kits	58
The Tableware, Floors kit.....	60

*No contractual photos

TRIGANO



More than 90 years' experience

designing new and innovative solutions
for the leisure and holiday home industry.
Our products are made in France, in our
Sarthe, Drôme and Loiret factories.



Technical adaptations

to optimise canvas treatment
and ease of use
(assembly/disassembly).



Life-size testing.

Our models are assembled and tested
over several years in outdoor locations
on our production sites.



A strict quality policy

that remains consistent over every
part of the production process,
guaranteeing your investment over
the long term.



All of our tents are protected by a 5-year guarantee if you
choose the TRIGANO installation service.

Expertise

The Floor



We source our wood from sustainably managed Scandinavian forests.

The Class 4 pine treatment provides crucial longevity for our lodges and bungalows

The Structure



Whether wood or steel, our structures are weather-resistant and can stay up all year round.

The Canvas



The outer canvas layer is made from PVC M2 or Tencate M1 fire-resistant fabric.

World-class canvas quality

Canvas Camp540pc-3i

This technology offers several advantages:

- ✓ Extra safety and protection from fire (M1 class fire resistance)
- ✓ A more resistant canvas
- ✓ A striking, cotton-finish appearance
- ✓ 540 g/m²



Canvas PVC

Used particularly for our roofs, PVC fabrics ensure:

- ✓ Additional safety and protection thanks to M2 flame retardant properties
- ✓ Lifespan and resistance
- ✓ Easy maintenance



The Trigano Group is committed to preserving our natural surroundings and protecting the environment. Our company ethos and 80 years of business in the open-air leisure industry depend on it.

An environmentally friendly solution

The very concept of canvas habitat is ecological and in harmony with nature.

Wood is a natural material par excellence.

Its use in the terraces of Trigano canvas bungalows and its origin from sustainably managed forests ensure integration into the environment.

Trigano ensures the recovery of materials for their reprocessing (recyclable - 95%) in their manufacturing process.

Trigano is attentive - limiting the impact on the environment: use of aqueous adhesives without VOCs (Volatile Organic Component).

Trigano encourages its suppliers - to set up waste sorting and recovery channels.





Trigano an You

Trigano provides a free service that promotes your page on our website.

The Internet is today an essential medium for campsites. But having a website doesn't mean being on the net. For this, you need a good SEO so that your customers find you more easily.

Our site www.trigano-hpa.com benefits from exceptional natural referencing, particularly on internet search engines, and we want you to benefit from it.

To do this, we have implemented an interactive map system allowing - your customers to be directed with a few clicks on your home page.

Videos and photos of each Lodge and Bungalow are at your disposal to make your brochures and websites even more attractive.

We are also talking about you on our social networks!

When our customers send us pictures of our lodges being installed or in service, we share the information on our social networks. On Facebook, over 25,000 people are subscribed to our page and like to see where they are our lodges.

We mention the page of the partner campsite, thus offering visits to its page as well as to potential subscribers.

Do not hesitate any longer - make people talk about you on our social networks, share your photos - your Trigano HPA contact!

You can also integrate videos from our Youtube channel into your site to offer your customers a better view of our products. Videos offer a better customer conversion rate.

Find us on our social networks:



Assembly





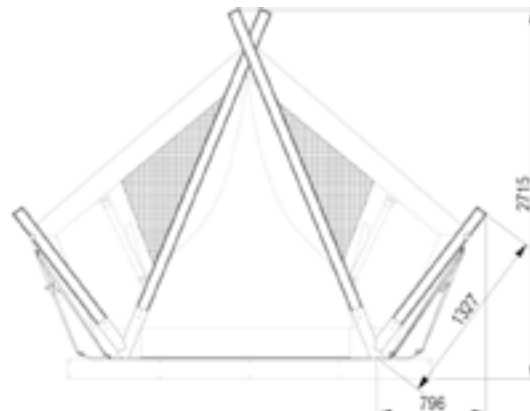


Moorea Accommodation for 2 people

The nomadic spirit, a simple and effective solution for camPeople in search of freedom.

The Canadian revisited with the strength, insulation and natural feel of canvas and a wood frame.

A shape designed to optimize the necessary floor space while maintaining a feeling of space - the interior thanks to the frames inclined.



Technical data

Colors: beige

Height: 271 cm

Width: 347 cm

Depth: 311 cm

Structure: autoclave pine Ø 80mm, class 4

External interlining: Polyester fabric: 420 g / m² - M1

Roof: Bicolour PVC 630gr / m² - M2

Optional floor: 408x268 cm = 10.93 m²





TIPIHOME

Unusual holidays in the TIPIHOME

Find your childhood dreams with our new atypical accommodation equipped with a parental bedroom and a child's bedroom upstairs.

For optimal comfort, a bathroom with toilet and sink is integrated.

Increase the outdoor space with our terrace on stilts and its awning.



Rapidity, Simplicity and Charm

The original design of the Tipihome allows an assembly suitable for many plots due to its pile soil.

Due to the strength of its treated wood structure and the quality of the canvas, no dismantling is necessary in winter.

Tipihome technical data

Main Features

tipis Area	decagon Ø 5.36 m = 22,88 m ²
Area of the terrace (option)	5.41 x 2.70 m = 14.60 m ²
Interior dimension of the parents' room	3 côtés = 7.28 m ²
Interior dimension children's room	mezzanine Ø 3.25 m = 7.76 m ²
Interior entrance / living room	5 sides = 12 m ²
Interior bathroom dimension	2 sides = 4.90 m ²

Teepee structure

Teepee frame	Class 4 autoclave pin, 68 x 68 mm + galvanized steel connectors and aged iron-colored polyester paint.
Partitioning	Wooden wall in vintage oak "EGGER", 19mm thick + grooved profile frame.

Canvas

PVC sand	680 gr/m ² – M2
Polyester / cotton	beige 430 gr/m ² – M2
Tension of the canvas	By rods and rails

Bathroom

Sanitary cabin composed of an 80 x 80 cm shower, a sink, a toilet, 2 vintage lights controlled by switch and an electrical outlet.
"EGGER" vintage oak wood wall 19 mm thick + grooved profile frame
50 Liter electric water heater



Equipments

Rooms	Headboard in the parents' room, Mattress: 24 kg / 12 cm of hypoallergenic polyester foam. Parents bedroom: 1 box spring + 140 x 190 cm mattress, Children's bedroom upstairs: 2 box springs + 80 x 190 cm mattress
kitchen	1 sink unit with 2 compartments and 1 curtain L = 56 cm; p = 83 cm; H = 95cm 1 glass-ceramic hob cabinet with 4 compartments and 2 curtains L = 93 cm; p = 45 cm; H = 95cm Table: 100 x 60 cm, slate-style folding top, 1 Ø80 mm sliding leg in aged iron painted steel. 4 seats and optional 1 hexagonal table and 5 acacia chairs for the terrace. Refrigerator: Silver table top, class A +, 118L including 15L freezer Microwave: Silver 20 liters - 800Watts - 8 functions - 13 kg - dim: H29 x L45x P37 cm
Electric	Lighting: 7 LED bulbs 8W - 2700K - 800Lm - 220V 3 LED bedside lamps 5W - 220K - 260Lm -220V Switches: 3 single and 1 double Electrical outlets: 4 in the living room, 1 in the bathroom, 4 in the parents' room, 3 electrical outlets upstairs in the children's room
Convector (option)	750 W

Tipihome



PEOPLE

4 à 8

ROOMS

2
(2,2x2,35m)

AREA

46 m²
(9,2 x 5m)

Lodge 46 with bathroom

KENYA 46

PEOPLE

4 à 6

ROOMS

2
(2,20 x 2,35m)

AREA

34,5 m²
(6,9 x 5m)



Lodge 34 with bathroom

KENYA 34

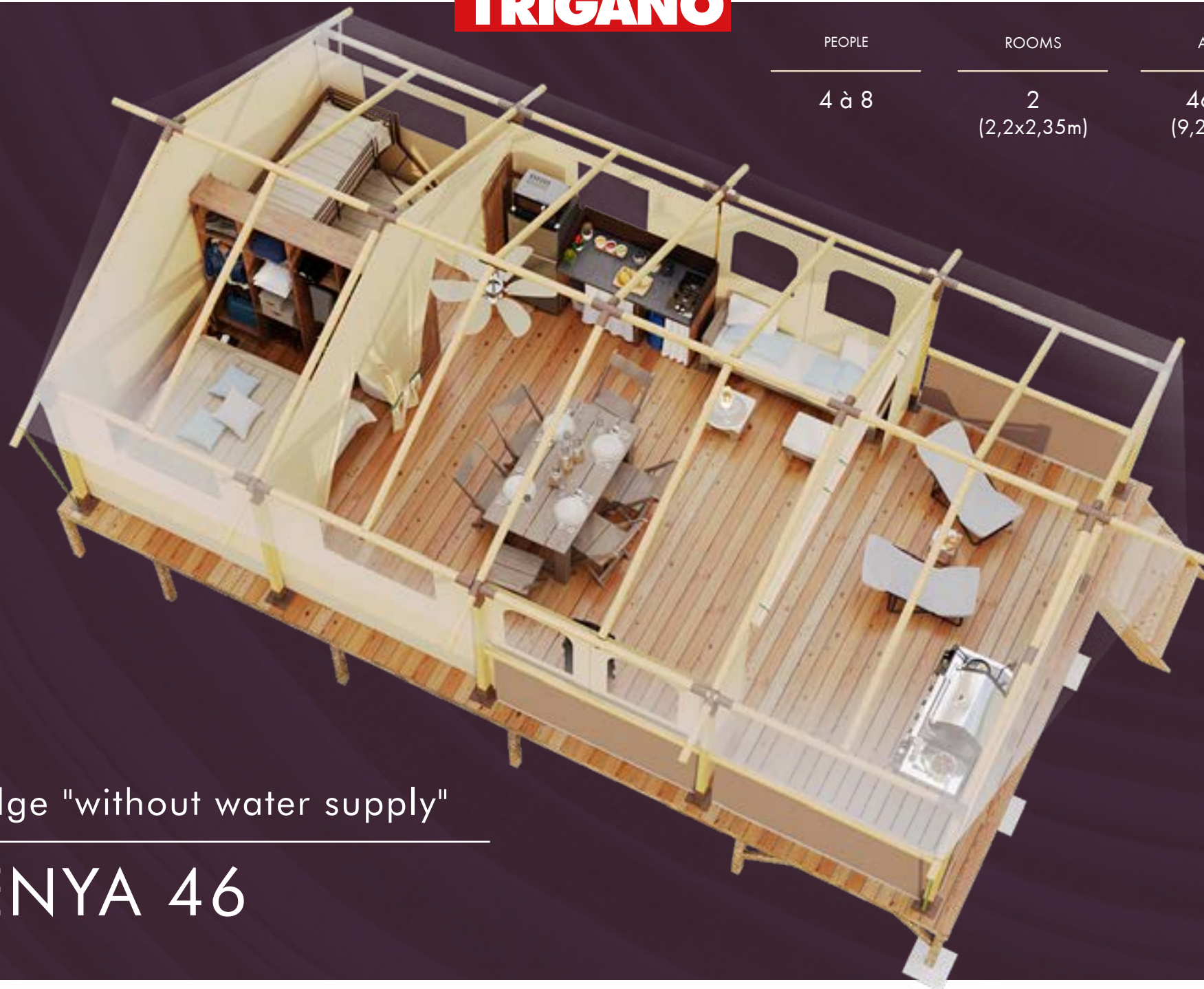
PEOPLE

4 à 8

ROOMS

2
(2,2x2,35m)

AREA

46 m²
(9,2 x 5m)

Lodge "without water supply"

KENYA 46

PEOPLE	ROOMS	AREA
4 à 6	2 (2,20 x 2,35m)	34,5 m ² (6,9 x 5m)



Lodge "without water supply"

KENYA 34

2 Bedrooms

(2,20 x 2,35m)





Bathroom

Shower, toilet, sink, water heater





Side access



Front access



Vintage Glamping

The Kenya range is now offered with vintage pine furniture embellished with a trendy aged iron touch.

The electric kit is equipped with high quality equipment and a fan with integrated lighting in the living room.

This furniture has been specially designed for intensive use and is climate resistant under canvas.





A functional **Kitchen**

Furniture with significant storage capacities – a 4 ring gas stove – An anthracite kitchen sink equipped with a stylish set of taps.



Create a **cosy** space

Lodges for the whole family

The Kenya lodges are designed with 2 bedrooms located at the rear or on the right depending on the model.

The main bedroom features a double bed, while the second bedroom has a bunk bed with room for 3 children or 2 adults.

The Kenya 46 model has an optional double sofa bed in the lounge/living room area, with a TV optional as well.



An outdoor **aventure**

The Safari atmosphere of this lodge will take guests on an adventure that is really out of the ordinary, charmed by the wood frame and the cotton-like appearance of the Subrenat fabric..

The new KENYA benefits from a side height of 2 meters for more volume and clarity. It is offered either with a new, very bright veranda or a lodge entrance gable located on the interior part of the terrace. (the 2 options are compatible with each other on the KENYA 34 model with or without bathroom).

Our vintage furniture kits harmonize perfectly with the wooden frame and the Subrenat fabric.

The Kenya can remain assembled throughout the entire year.





A foolproof **structure**

Made up of robust materials, class IV autoclave pine frame, steel connectors, Subrenat® abric exterior partitions tensioned by straps stainless steel ratchets, the Kenya structure is resistant. Kenya can stay ridden all year round (with the Altitude Kit option for snowy areas).

The adjustable piles from 18 to 200 cm allow the floor to adapt to any terrain, without damaging it. (maximum height = 160 cm in front of the Lodge)

1 stairway with 1 to 4 steps with optional handrails for stilt floors with a maximum height of 200 cm which is installed in front or one of the side

1 stairway with 1 to 4 steps with optional handrails for stilt floors with a maximum height of 100 cm which is installed in front or one of the side





Enjoy all the comfort of a spa break

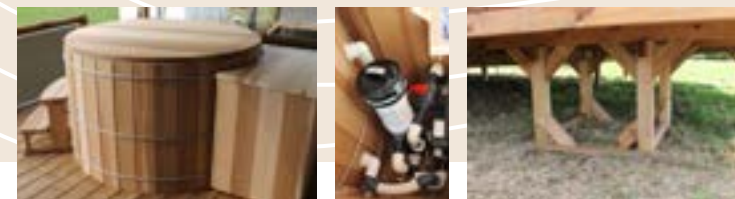
On your own front porch

Our four-seater Nordic bath can be installed right onto the terrace of the lodge. This heated bath is great for your health and well-being, offering your clients a chance to unwind in the open air.



Storvatt, c'est un savoir-faire et la maîtrise du travail du Red Cedar, un bois aux qualités et à la durabilité exceptionnelles. Les pièces de bois massives sont assemblées au millimètre, les cerclages de serrage sont réalisés dans des barres inox pleines cintrées et filetées, le bois est poncé finement pour un toucher très doux. La filtration et le chauffage électrique sont associés à notre système de délestage vous permettant de ne pas augmenter la puissance.

Nordic bath electric D150 cm (900 liters)
 1st choice Red Cedar tank dimensions 150 x h90 cm,
 3 stainless steel strappings - 4 interior benches - 1 shelf adapted to the Lodge terrace, Red Cedar lid in 3 parts and locking system, Circulation pump - Cartridge filter + 1 spare cartridge , 3000 Watt balboa bp601nj heater with control and programming keyboard, red cedar technical box, optional Led lighting



Technical specifications

Kenya 31

framework

Frame	Autoclaved class 4 pine, Ø 80mm + galvanised steel connectors and rust-brown polyester paint
Rambardes en option	Railing with BATYLINE FERRARI grill protection

Canvas

External canvas	canvas Camp540pc-3i Subrenat 540 g/m2 - M1
Roof canvas	PVC 640 g/m2 - M2 – polyplan mat
Canvas tightening	On the ground, using rings and rails
Roof-frame attachment system	Stainless steel ratchet straps
Facade	1 large door divided into 2 parts with zipper lockable by padlock (not supplied)
Side panels on the terrace (optional)	PVC 630gr/m2- M2 Ferrari.
Terrasse	Covered terrace of 12m ² + 3m ² uncovered as XL floor

The Vintage Kenya Bathroom (KENYA 34 and KENYA 46)

bathroom pre-assembled as a kit in our factories, to be placed directly on the Lodge's stilt floor
 Composed of a shower with LED lighting, a sink, a toilet, 2 vintage lights controlled by a switch and an electrical outlet.
 Vintage wall.
 100 liter electric water heater with integrated pressure limiter.
 Quick connection to the electrical box, a water supply and waste water

Plancher

Piloti-mounted flooring

Treated to European class III and IV autoclave standards from certified Scandinavian forests.



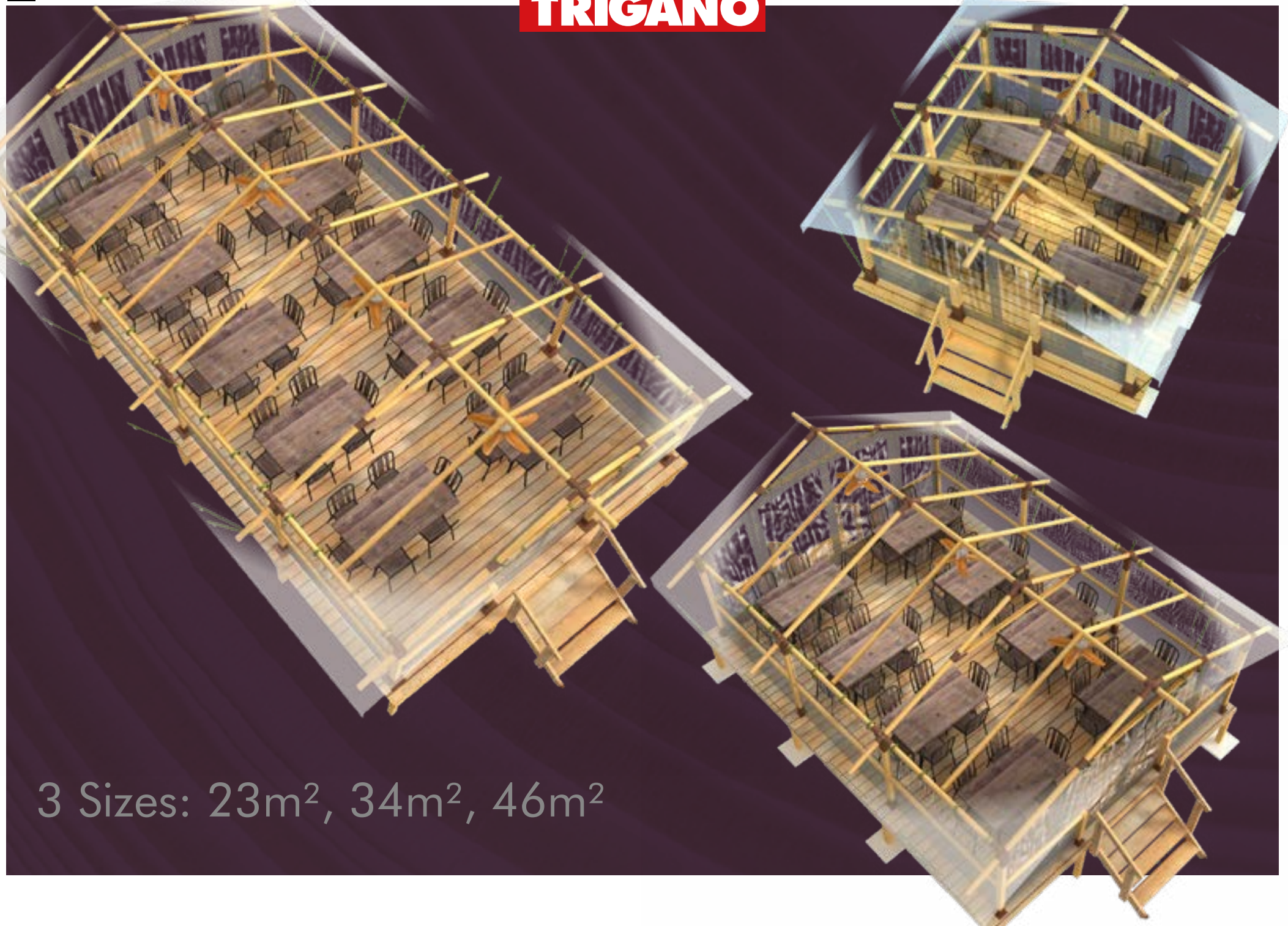
To be positioned on gravel slabs
 Floor adjustable from 18 to 200 cm to adapt to the configuration of your land
 Maximum height = 160 cm in front of the Lodge.
 27 wooden slats of 145 mm
 Equipped with posts 90 x 90 mm
 95*45 mm joists and 120 x 45 mm crosspieces,
 Tarpaulin under the floor to avoid cold drafts,
 stainless steel screws,
 1 staircase with 1 to 7 steps.
 Optional stair railing



Kenya Evènements

Restaurant - Meeting - Reception





3 Sizes: 23m², 34m², 46m²

The Lodge **Evènement**

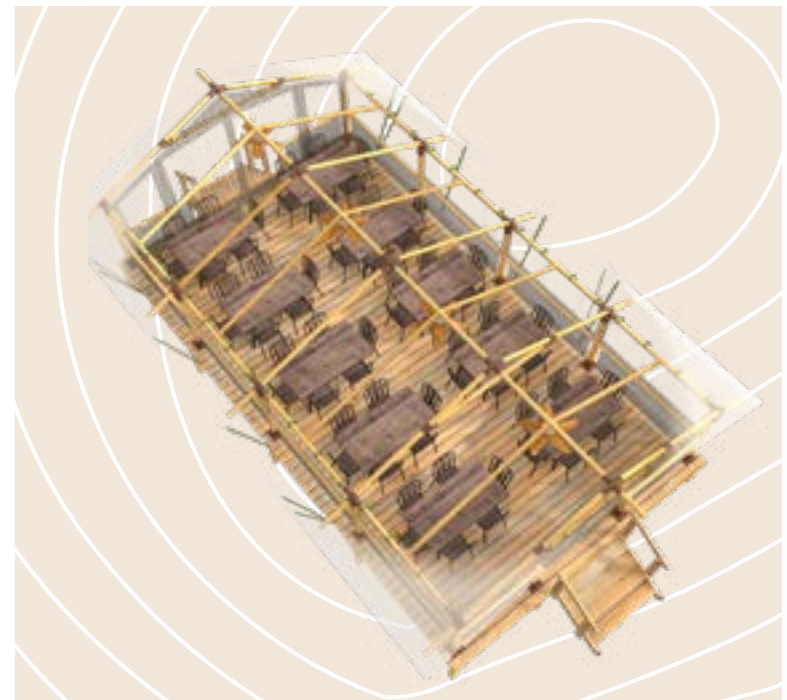
the creation of a glamping party space

Available in its Lodge version, the KENYA Event will allow you to have an ideal and glamping space for games, parties or a catering area that will delight your guests.

Very pleasant to live in, these new spaces will harmonize perfectly with the nature of your campsite.

Equipped with 2 accesses at each gable, this Lodge opens easily thanks to its removable covers to get outside

Interconnected TRIGANO floors for large clean and common spaces.



The **Altitude** option enables the Kenya to climb to the summits

The altitude option of our KENYA range allows our Lodges to be installed in snow-covered areas. The ultra-strong wooden frame withstands snowfall and strong winds, making the Kenya resistant to testing situations.







PEOPLE

4 - 6

ROOMS

2
(2,35 x 2,00m)

AREA

32 m²
(6,3 x 5m)

Lodge

BALI 32

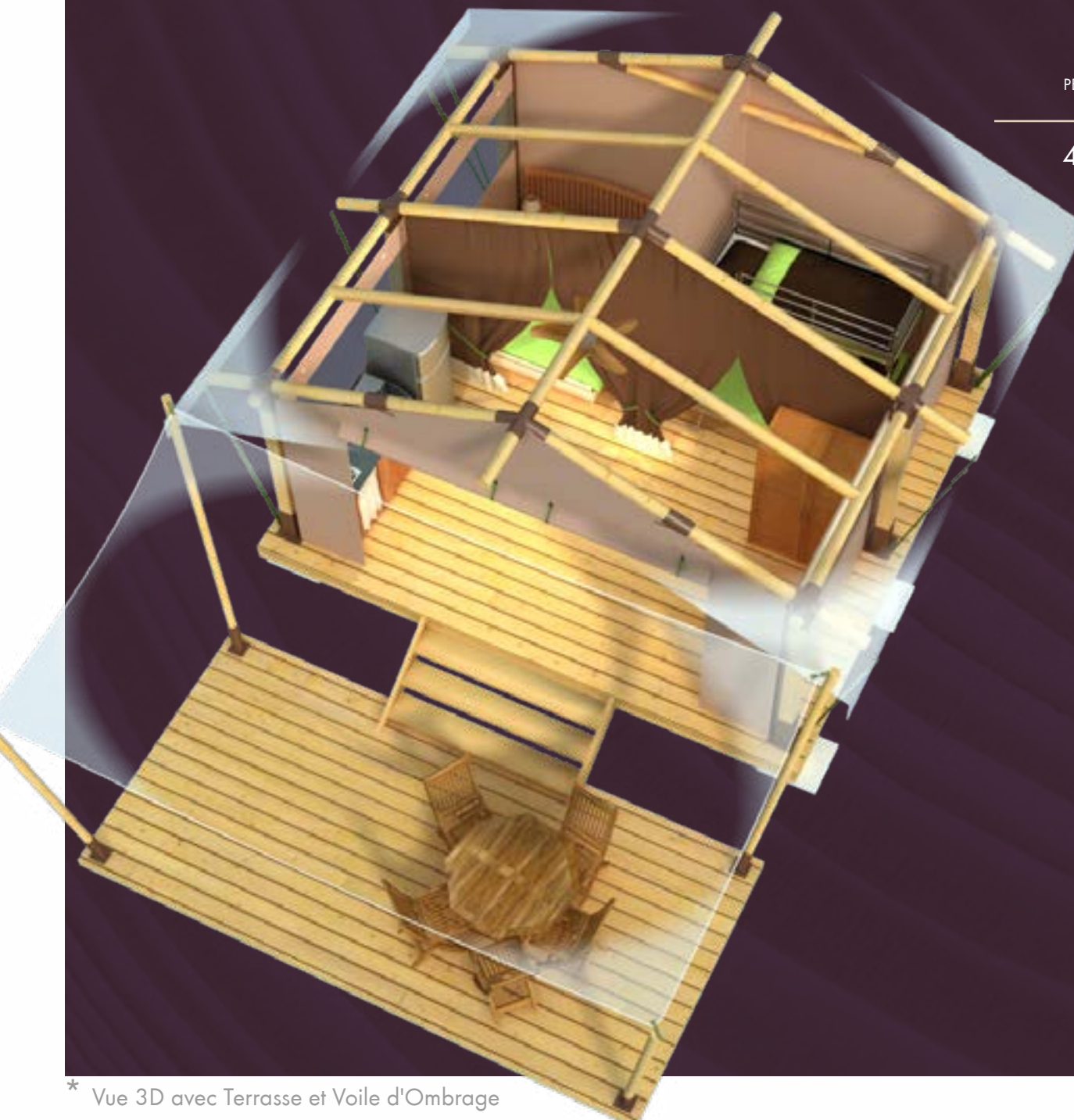
Rooms at the back

à partir de 9611 €^{HT}

*Lodge + plancher + rambardes



*No contractual photos



PEOPLE

4 - 6

ROOMS

2
(2,35 x 2,00m)

AREA

20 m²
(4 x 5m)

Lodge

BALI 20F
Rooms au fond

The Glamping Ecolodge

The new BALI range, designed to be the entry-level of the TRIGANO Glamping range will allow your customers with small budgets to discover a journey under canvas with exceptional comfort.

A large living area with a good class of amenities will make a stay very pleasant. The TRIGANO Acacia furniture kit goes perfectly with the wooden frame and PVC sheeting of the BALI.

Frame: Class 4, Ø 80mm autoclave pine + galvanized steel connectors and antique iron colour polyester painted

Optional guardrails: Guardrails with Batyline Ferrari protective textile mesh.

Exterior fabric: Periphery / perimeter 640g/m² M2 mat PVC, Ceiling lining, M1 Polyester 205 g/m² - for thermal insulation.

Roofing canvas: 640g/m² M2 matt PVC, Polyplan mat.

Fabric tension: On the ground with a rail/trim strip - and the roof on the frame with stainless steel ratchet straps.

Front panel 1, a 2-part large door with a zip fastener and padlock (not supplied)



A pleasant rest area

Two well-insulated bedrooms with their interior fabric linings allow you to relax even in the middle of the day.

These bedrooms can be equipped with a double bed in the parents' bedroom and a mezzanine bed that can accommodate 3 children or another couple. The bedrooms are positioned on the left of the Lodge if it is fitted with our new more spacious monobloc bathroom unit.



Acacia Glamping

The Bali range is now offered with Acacia wood furniture designed specifically for our models. The reversible air conditioning or heating options give users more comfort.

The electrical kit comprises high quality appliances and a fan with integral lighting in the living room. This furniture stands up to the weather under canvas and heavy use.



More autonomy

The Bali 32 Lodge can be laid out with the 2 bedrooms on the left and the monobloc bathroom at the back on the right.

This configuration provides more autonomy for families with a shower, sink and toilet.



A **friendly** living room and patio

Enjoy a clear space on the patio of our Bali 32 which can be extended (+9m²) in the XL version.

For the Bali 20 we can supply you a patio on the ground with a sun awning.

The Acacia kitchen and its optional storage units optimize the space and create harmonization between the canvas and the wood frame of the lodge.





A barbecue party, right on your terrace

A holiday just isn't a holiday until you fire up the barbecue. That's why we're offering an optional barbecue kit for your lodge, complete with a stainless steel 3-burner gas grill featuring an additional hob at the side. It's the perfect way to cook a whole barbecue dinner, from the meat, fish and vegetables to all the side dishes you need. Turn your terrace into the ideal al fresco kitchen!



Technical specifications

Bali 45

Structure

Frame	Class 4, Ø 80mm autoclave pine frame + galvanized steel connectors and antique iron colour
Optional guardrails	Guardrails with a Batyline Ferrari mesh protection

Fabric

Inner	Inner coating of 205 g/m ² - M1 polyester vellum for thermal insulation
Outer	Outer coating of 640 g/m ² mat M2 PVC – Mat Polyplane
Roof canvas	640 g/m ² mat M2 PVC – mat Polyplan
Fabric tension	On the ground by trim strips and rails
Roof tension system on the frame	By straps with stainless steel ratchets
Front face1	A large door divided into 2 parts with a padlockable zip fastener (padlock not supplied)
Side patio panels (optional)	630gr/m ² Ferrari M2 PVC
Patio	12m ² + 3m ² covered patio. Not covered in the XL Floor version

Monobloc bathroom for Bali 32D

Monobloc bathroom cabin (2.34m x 1.64m) fully pre-assembled in our factories, to be placed directly on the lodge's stilted floor. Consists of a 100x80 shower, a washbasin, a toilet, 3 switch-operated lights and a waterproof electrical socket. 16mm melamine coated chipboard walls with a natural oak finish; door lockable from the inside. A 75 litre electric water heater with a pressure relief valve. Quick connection to the electrical box, a water supply and a waste water drain.

Flooring

Piloti-mounted flooring 4,64 x 2,68 m (12,44 m²).
Treated European standards autoclave class III and IV from certified Scandinavian forests.



Installation on gravel-covered slabs
Flooring can be adjusted from 18 to 200 cm to adapt to the terrain
Wooden planks 27 x 145mm, sourced from certified Scandinavian forests
Fitted with six 90 x 90mm posts
95 x 45mm strips and 120 x 45mm cross ties,
Under-floor tarpaulin to exclude draughts
Stainless steel screw fittings
1 stairs from 1 to 7 steps.
Optional stair railing.



TRIGANO
Lodges Manufacturer

Made in France





TRIGANO

ROOMS

AREA

2
(2,2 x 2,2)

20 m²
(4,4 x 4,4m)
+
Terrace
12,5m² (2,8 * 4,5m)

Lodge

MARQUISES



Le bungalow institutionnel de la gamme

Le bon rapport qualité/prix.

De confection PVC, la Marquises émane de notre bungalow historique le Caraïbes.

Entièrement relookée la marquises offre plus d'espace et peut rester monté à l'année (sauf zones enneigées).

Pouvant héberger 4 people dans 2 rooms spacieuses, la Marquises est le bungalow idéal pour découvrir l'expérience des vacances en hébergement toilé et retrouver les plaisirs des colonies de notre enfance en y associant plus de confort.

Montée sur un plancher pilotis avec un escalier 2 marches, on peut y ajouter une terrasse en option pour plus d'espace.



Technical information

General characteristics

Bungalow floor coverage	4,4 x 4,4m = 19,36 m ²
Terrace area	2,79 x 4,5m = 12,5m ²
Number of people	4 - 5
Number of bedrooms	2
Mosquito netting and windows	1 shutter in each bedroom + mosquito netting 3 outside shutters in the living room + mosquito netting

Structure

Frame	Galvanised steel, diameter 30 x 1.5mm
-------	---------------------------------------

Canvas

Interior canvas	Cotton velum 200g/m ²
Exterior canvas, Walls and gables	Coated PVC 680g/m ² - M2
Roof canvas	Coated PVC 680g/m ² - M2
Canvas tightening	On the ground, using rings and rails
Roof-frame attachment system	Stainless steel ratchet straps
Facade	Fabric door with a wide zip opening

Flooring

Floor on stilts 5.36 x 4.76 m (25.51 m²).

Floor on stilts + integrated terrace:
5.36 x 7x25 m (38.86 m²).

Treated European standards autoclave classes III and IV



Installation on gravel-covered slabs
Adjustable floor to adapt - the configuration of your grounds
27 x 145mm wooden slats, from certified Scandinavian forests
Equipped with 18 posts of 90 x 90 mm
95 * 45 mm joists and 120 x 45 mm sleepPeople,
Cover under the floor to prevent cold air currents from rising,
Stainless steel screws,
2 steps staircase.
Max floor height 50 cm

Ground-level terrace

Covered terrace on small piling floor 4,50 x 2x79 m (12,55m²)

Stilts height 10 - 20 cm

Composed of 27 x 145mm wooden slats treated with European standards, class IV autoclave from certified Scandinavian forests

95 x 45 mm joists and 120 x 45 mm sleepPeople, Anti vegetation cover under the floor,
Stainless steel screws



Vintage furniture kits



All our Vintage furniture kits are available in a 3-plate induction version.
www.trigano-hpa.com

Mobilier vintage pour Kenya 34 et 46 avec salle de bain

Table 150 x 80 x H75cm VINTAGE PINE	1
Chair VINTAGE PINE	6
TRIGANO lounge chair longue	2
Express lounge sofa 140 x 190 cm sleeping area, 10 extra-large slats, ensuring optimal sleeping comfort Solid pine and PP structure Polyurethane foam seat H.R. 3.5 kg/m ³ Ultra-comfortable synthetic fibre backrest Polyurethane foam mattress H.R. 3.5 kg/m ³ Thickness 12cm covered with synthetic fibres 100 g/m ² - Ticking 100% polyester, Legs: birch L 190 x H 90 x P 97 (206 open) cm - Anti-smudge resistant fabric	OPTION
Sunbath / outdoor sofa: 180 x 60 cm 2 ottomans 39x39 cm 1 bedside table 39x39 cm, Set of cushions provided In class 4 autoclave pine. Robust square upright of 80x80mm. Storage of the 2 poufs and the bedside under the sunbathing area to save space on the terrace of your Lodge.	OPTION
VINTAGE parent bedroom wardrobe W122 x D35 x 218H cm	2
VINTAGE kids bedroom wardrobe W167 x D50 x 175H cm	1
Vintage kitchen cabinet for 4-burner gas stove and sink W152 x D60 x H85 cm	1
VINTAGE cabinet hides fridge and worktop W143 x D59 x H84/175 cm	1
Work surface laminated: 38 mm thick with a black resin sink comprising a 60x60cm 4-burner gas stove, cast iron burner grid, integrated electronic ignition, thermocouple safety, enamelled steel burner caps. Total power 7000w a bowl and a drainer, heat resistant up to 180°. Chrome kitchen mixer H34 cm with swivel and flexible spout. Shower head with two functions: jet or spray. 3/8" flexible supply connections . Ecological taps.	1
Fridge 160 litres - Freezer 45 litres - Silver Class A+, frost free, 3 trays, 1 vegetable crisper. Reversible door Dimensions: H 143 x L 54.4 x P 56.6 cm	1
Micro-onde Sylver 20 litres - 800 Watts - 8 fonctions - 13 kg, Dims : H29xL46xP37 cm	1
VINTAGE suitcase storage unit W74 x D60 x H165cm	OPTION
Vintage gas stove : cast iron, Butane, propane and LPG compatible Maximum consumption of 215 gr/h (+or- 55 hours on one bottle) 30 mbar regulator and hose included Piezo ignition on battery, Catalytic system that does not require a conduit connection Delivered ready to use.	OPTION



Acacia Furniture



All our Vintage furniture kits are available in a 3-plate induction version.
www.trigano-hpa.com

	TipiHome	Bali 20 Marquises	Bali 32F and kenya 34 et 46 without bathroom
Acacia chair	5	5	5
Octagonal table Ø 120cm	1	1	1
TRIGANO lounge chair	2	2	2
Low acacia bedside table 39x39cm	0	OPTION	OPTION
Canvas-covered acacia shelves 3 shelves. Dimensions: L 60 x D 40 x H 123cm	0	OPTION	OPTION
Acacia wardrobe with shelves 4 shelves. Dimensions: L 60 x D 47 x H 125cm	0	OPTION	OPTION
Acacia shelves without canvas 3 shelves. Dimensions: L 60 x D 40 x H 123cm	0	1	1
Acacia wardrobe 4 shelves + 1 clothes rail – Dimensions: L 92 x D 47 x H 140cm	0	OPTION	OPTION
Acacia kitchen furnishings including a 2-burner portable stove + 1.5m flexible pipe + propane pressure regulator, 4 storage spaces closed off with a double door, 1 storage space closed by a sliding curtain, work surface, stainless steel utensil rack, Dimensions: D 60 x L 125 x H 91cm	0	1	1
160 litre refrigerator – 45 litre freezer – Silver. Class A+, automatic fridge defrosting 3 shelves, 1 salad crisper. Reversible door Dimensions: H 143 x L 54.4 x D 56.6cm	Refrigerator: Table top color Silver, class A +, 118L including 15L + freezer 800w microwave	home appliance	kit électroménager
Sylver 20 litre microwave – 800 Watts – 8 functions – 13kg, Dimensions: 29 x 46 x 37			
Aluminium parasol, beige polyester canvas 250g/m², black base with wheels, 25kg	0	OPTION	0
Gas bottle holder	0	1	1

Options

LANDMANN Gas Barbecue

Dimensions: 140 x 120 x 57cm, Weight 52kg, 3 stainless steel burners + lateral hob (total power 14kW), cooking surface 65 x 45cm (12 people) with 2 enamelled cast-iron grilles, Burners guaranteed 5 years, other components 2 years
Protective hood, enamelled cast-iron plancha, stainless steel spatula, tongs and fork kit

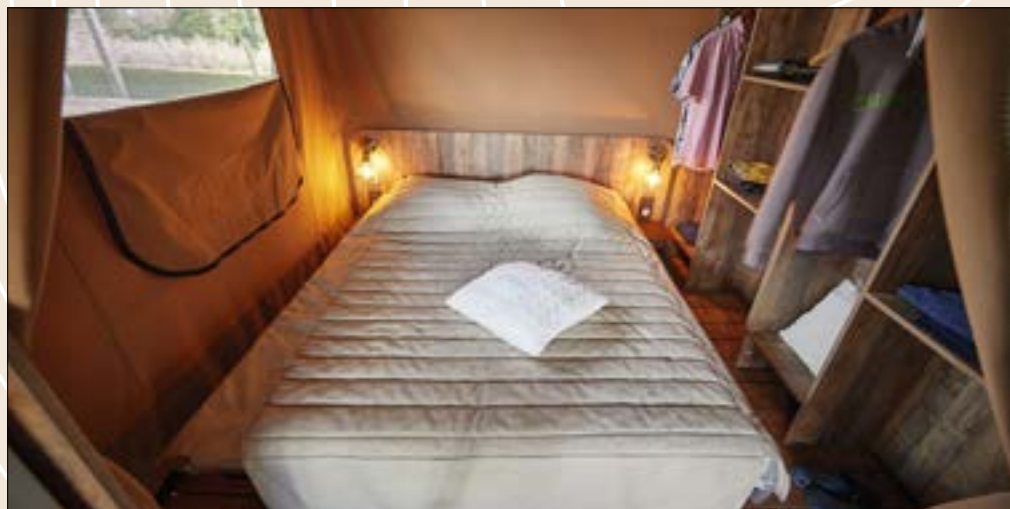
Vintage gas stove: cast iron, Butane, propane and LPG compatible

Maximum consumption of 215 gr/h (+or- 55 hours on one bottle)
30 mbar regulator and hose included
Piezo ignition on battery, Catalytic system that does not require a conduit connection
Delivered ready to use.

The sleeping kit



Acacia bed headboard



Find out all about our products and all the optional extras and equipment we have available at our website.
www.trigano-hpa.com

Sleeping Kit	2 People	4 People	5 People		6 People
The choice of finish	Acacia	Tipihome	Acacia	Vintage	Acacia & Vintage
Acacia headboard 140 x190 cm with 2 incorporated bedside tables (Bali, Balearic)	1	0	1	0	0
Vintage headboard 160 x190 cm with 2 incorporated bedside tables (Kenya)	0	0	0	1	0
Acacia bedside table 39x39 cm	0	0	1	1	2
Bed base 140x190 cm with 40 slats. Metal frame 30x30 mm square tube with wooden slats 53 x 8 mm. 5 reinforced PVC feet, height 28 cm.	1	1	1	0	0
Bed base: 160x190 cm with 40 slats, only for kenya vintage furniture models Square tube metal frame: 30x30 mm with wooden slats 53 x 8 mm. 5 reinforced PVC feet, height 28 cm.	0	0	0	1	0
Bed base 80x190 cm with 20 slats. 30x30 mm square tube metal frame with 53 x 8 mm wooden slats. 4 reinforced PVC feet, height 28 cm.	0	2	0	0	0
Metal mezzanine bunk bed 140x190 cm + 90x190 cm with metal box spring.	0	0	1	1	2
Mattress 80x190 cm Polyester foam of 24 kg/12cm hypoallergenic. Polycotton cover, removable by zipper.	0	2	0	0	0
Mattress 90x190 cm Polyester foam of 24 kg/12cm hypoallergenic. Polycotton cover, removable by zipper.	0	0	1	1	2
Mattress 140x190 cm Polyester foam 24 kg/12cm hypoallergenic. Polycotton cover, removable by zipper.	1	1	2	1	2
Mattress 160x190 cm for Kenya Vintage models 24 kg/12cm Polyester foam hypoallergenic. Polycotton cover, removable by zipper.	0	0	0	1	0
Bedding kit					
Cotton / PVC plastic mattress cover 160x190 cm	0	0	0	1	0
Cotton / PVC plastic mattress cover 140x190 cm	1	1	2	1	2
Cotton / PVC plastic mattress cover 80x190 cm	0	2	0	0	0
Cotton / PVC plastic mattress cover 90x190	0	0	1	1	2
Pillow 60X60cm washable at 40 °	2	4	5	5	6
2-seater duvet in taupe linen 100% polyester microfiber - 400 g - 220x240 cm	1	1	2	2	2
2-seater duvet in taupe linen 100% polyester microfiber - 400 g - 140x200 cm	0	2	1	1	2



Bathroom Vintage Kenya

Bathroom in two parts:

Toilets with access through a sliding door located at the entrance to the bathroom.

Spacious shower area 100x80cm

White ceramic basin with rectangular and spherical shapes equipped with an overflow, diameter 41cm. Weight 8kg

Storage shelves

Vintage pine wall.

Mirror: 50 x 70 cm Thickness 4mm

Electric water heater: 100 liters with integrated pressure limiter

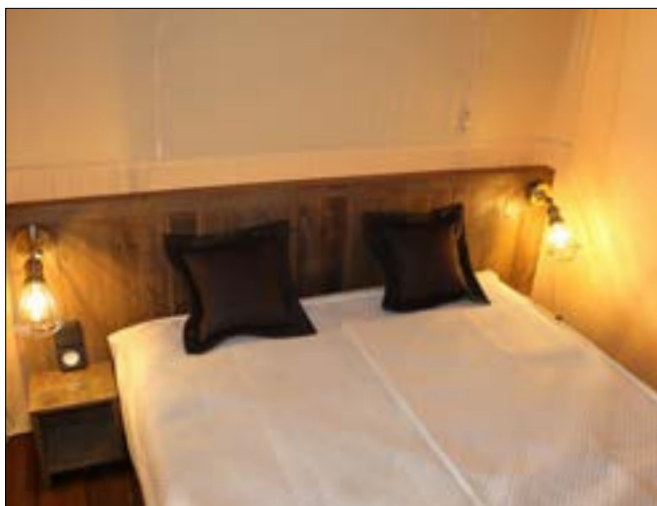
Quick connection to the electrical box, a water supply and waste water.





The electrical Vintage kit - Kenya

*non-contractual photo



			Kenya 34 ou 46 avec salle de bain
Wall lamp	H13,5cm x L10cm	Metal cages in aged brass. Ø12.6cm -H17.5cm	6
Lounge, terrace ceiling lights	Ø28cm - H16,5cm	Cloche in transparent glass, max 40 W - aged brass metal, black textile cord	1
Ampoules	Ø64mm H140mm	E27 ST64 - 4W CE standard	6
2P+E socket	Mureva Styl - SCHNEIDER	or equivalent	9
Switch	Mureva Styl - SCHNEIDER	or equivalent	8
Electrical box	IP55	1 differential circuit breaker 40A - 30mA + 2 circuit breakers (10 and 16 A) + 2 others with bathroom	1
500 W electric convector, Aged iron color + wiring or 2.5 kw reversible air conditioning			Option
Vintage gas stove: cast iron, Butane, propane and LPG compatible, 30 mbar regulator and hose included Piezo ignition on battery, Catalytic system that does not require a conduit connection Delivered ready to use.			Option
Fan with integrated lighting in the living room			1
Two-way switch with 2 wireless controls			2

The acacia electrical kit



Bali, Marquesas, Kenya without bathroom

1 dashboard electrical box

1 disjoncteur différentiel 30mA-40A

3 circuit breakers 10 A

1 switch and 1 fan with integrated lighting

2 parent bedroom sockets + 2 bedside lamps

1 children's room socket
+ 1 lamppost 2 controlled lights

2 sockets for kitchen furniture

1 microwave socket, 1 refrigerator socket

1 switch + 1 terrace suspension + 2 two-way with 2 wireless controls

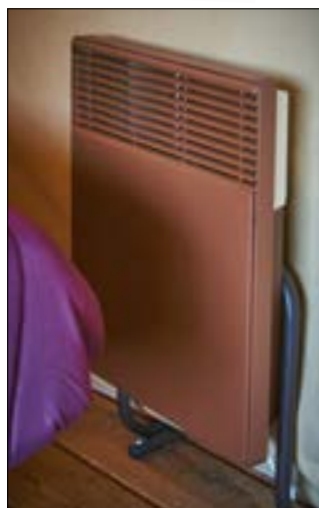
Octopus wiring + eco-energy bulbs

Heating (Option)

500 w electric convactor with wiring
aged iron color.

Reversible air conditioning (Option)

Vintage gas stove (Option)



Find out all about our products and all the optional extras and equipment we have available at our website.
www.trigano-hpa.com

The kitchenware kit



Quantity		Quantity	
Plate diameter 26cm	10	Nylon serving fork	1
Soup dish diameter 20cm	6	Cutlery holder	1
Dessert plate diameter 20cm	6	Table mat	1
Bowl diameter 14.5cm	6	Jug 1 litre	1
Mug 260ml	6	Electric coffee maker	1
Granity glass 310ml	8	Saucepan diameter 16cm stainless steel	1
Soup spoon	8	Saucepan diameter 18cm stainless steel	1
Fork	8	Stockpot diameter 24 cm	1
Knife	8	Shallow dish diameter 29cm	1
Teaspoon	8	Salad bowl diameter 28cm	1





anchor kit

Adjustable floor from 18 - 200 cm and equipped with 90 x 90 mm posts to adapt to the configuration of your grounds. The stilt floors fit in perfectly without distorting the landscape.

Piloti flooring in pre-assembled panels

TRIGANO flooring offers top class strength and robustness, relying on the finest wood sourced from certified Scandinavian forests.

They are composed of wooden slats treated European standards

autoclave class 3 and 4.

Piloti flooring provides a great product lifetime and adaptability across all sorts of terrain without needing to excavate or level off your plot.



Positioned on **slabs gravelled**, the floor frame is composed of 95 x 45 mm joists and 120 x 45 mm sleepers. Option: anchor kit.



A **staircase**, from 1 to 7 steps for floor height from 18 to 200 cm, including a maximum height of 160 cm at the front of the lodge. Optional stair railing.



Pre-cut terrace planks (27 x 145mm) ensure quick and convenient installation, and tarpaulin insulation under the floor prevents cold draughts entering the structure.

NB: Only the posts require cutting to adjust to the ground level.

**Screws
stainless steel**



Ground-level flooring

This is independent of the piloti-based floorings. It comprises 95 x 45mm strips and 27 x 145mm terrace floor planks. The ground-level terrace can be fitted with a canvas shade.

	Kenya 46	Kenya 34, marquées avec terrasse	Bali 32	Bali 20, Marquées	TipiHome	Moorea
flooring	9,57 x 5,36 m	7,25 x 5,36 m	6,82 x 5,36 m	4,76 x 5,36 m	6,21 x 5,36 m	4,08 x 2,68 m
surface	51,30 m ²	38,86 m ²	36,53 m ²	24,87 m ²	33,28 m ²	10,93 m ²
terrace				4,54 x 2,45 m au sol	2,07 x 5,36 m pilotis	comprise
No. of poles	28	20	20	16	16	6
Floor XL	11,31 x 5,36 m	8,99 x 5,36 m	8,56 x 5,36 m			



Our sales team will be pleased to guide you
in your choices and help you meet your needs.

Mona LALBAT

Regional Manager

Tel. 00336 77 29 19 68
mlalbat@trigano.fr

TRIGANO COLLECTIVITÉS

www.trigano-hpa.com

TRIGANO HPA
ZA HAUT ECLAIR
72600 MAMERS
FRANCE



Made in France

at the Trigano site in Mamers (Sarthe)



63



Find out all about our products and all the optional extras and equipment we have available at our website.
www.trigano-hpa.com



You'll find all our products on
www.trigano-hpa.com

TRIGANO
Lodges Manufacturer

